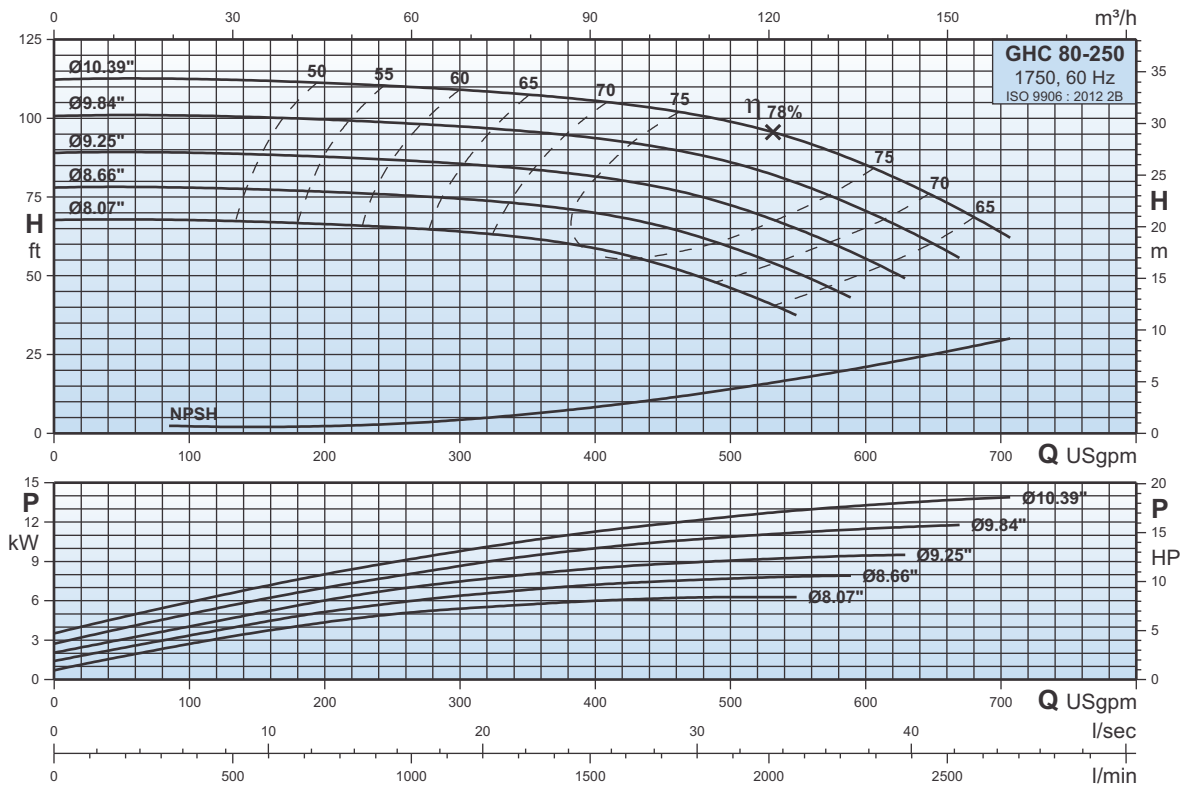


GHC 80-250

Curvas Características
Characteristic Curves
Courbes Caractéristiques

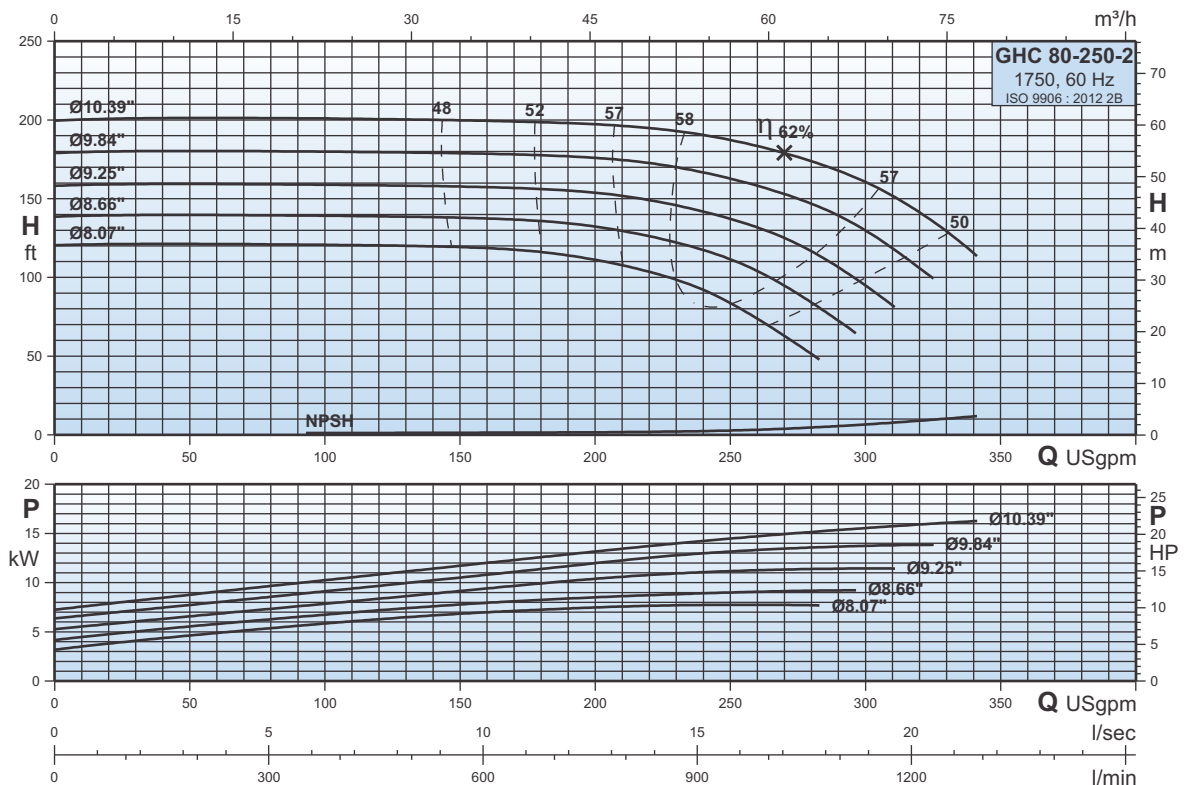
1750



GHC 80-250-2

Curvas Características
Characteristic Curves
Courbes Caractéristiques

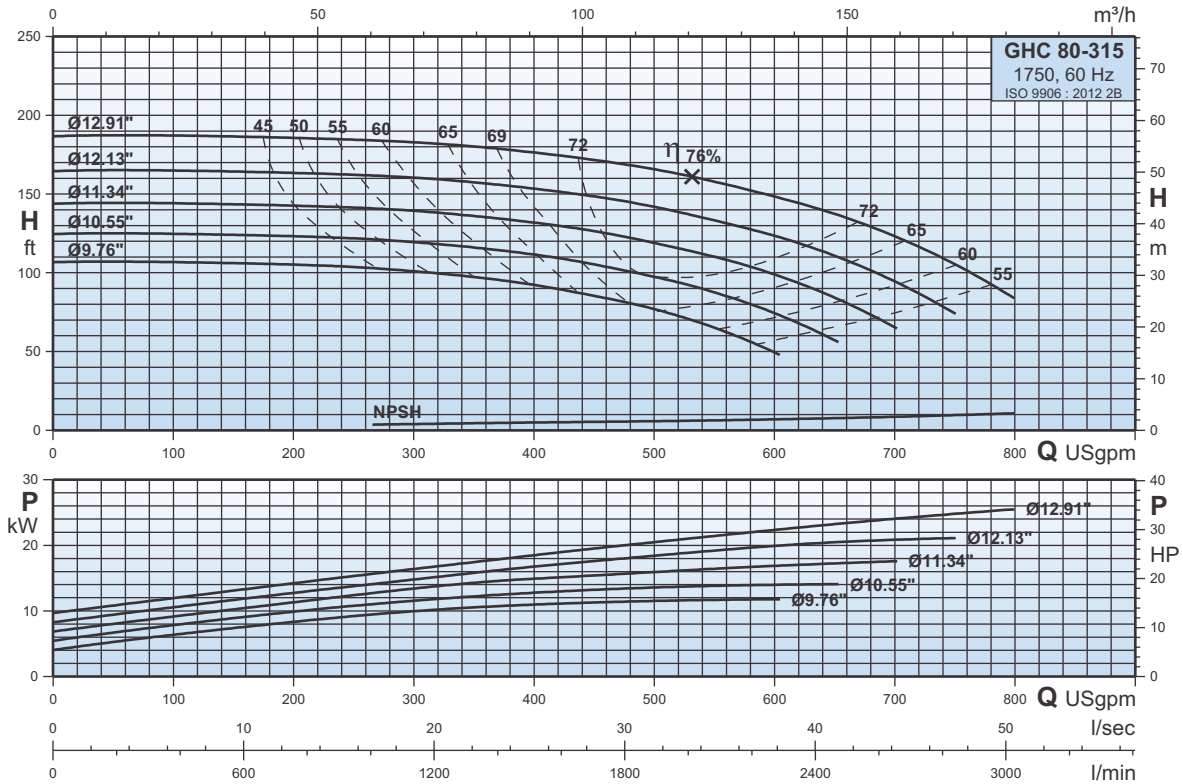
1750



GHC 80-315

Curvas Características
Characteristic Curves
Courbes Caractéristiques

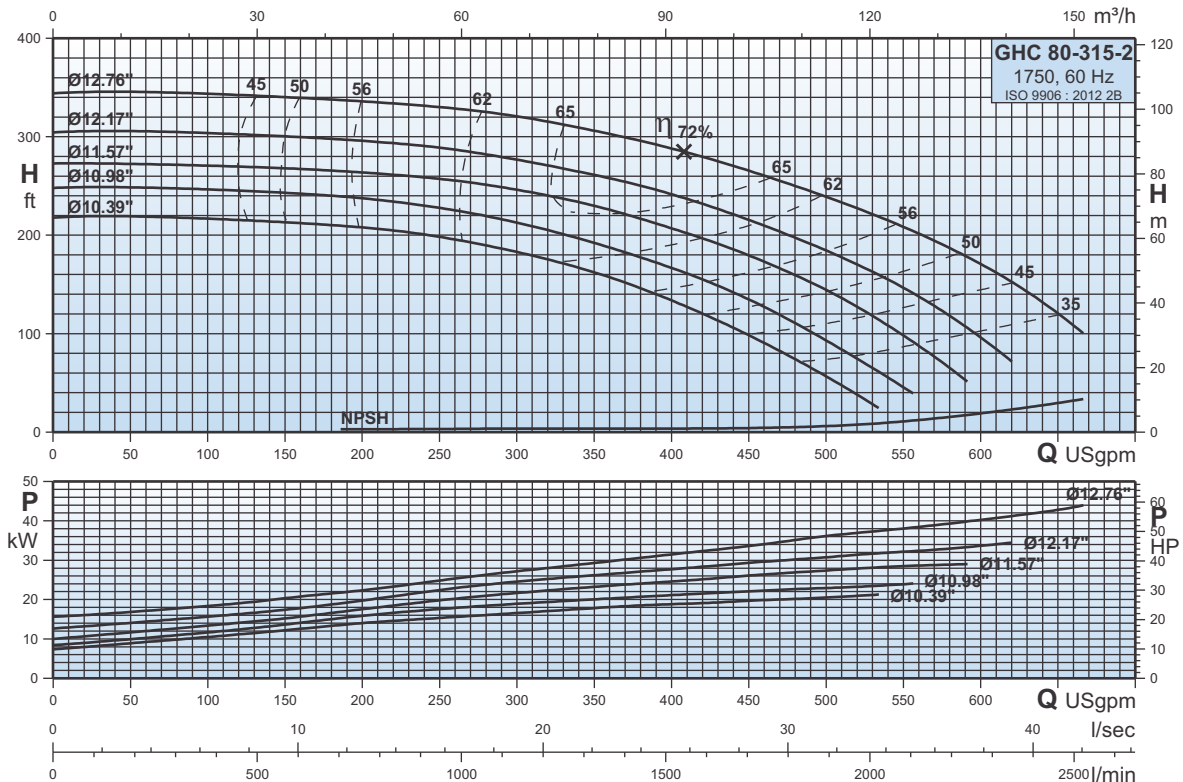
1750



GHC 80-315-2

Curvas Características
Characteristic Curves
Courbes Caractéristiques

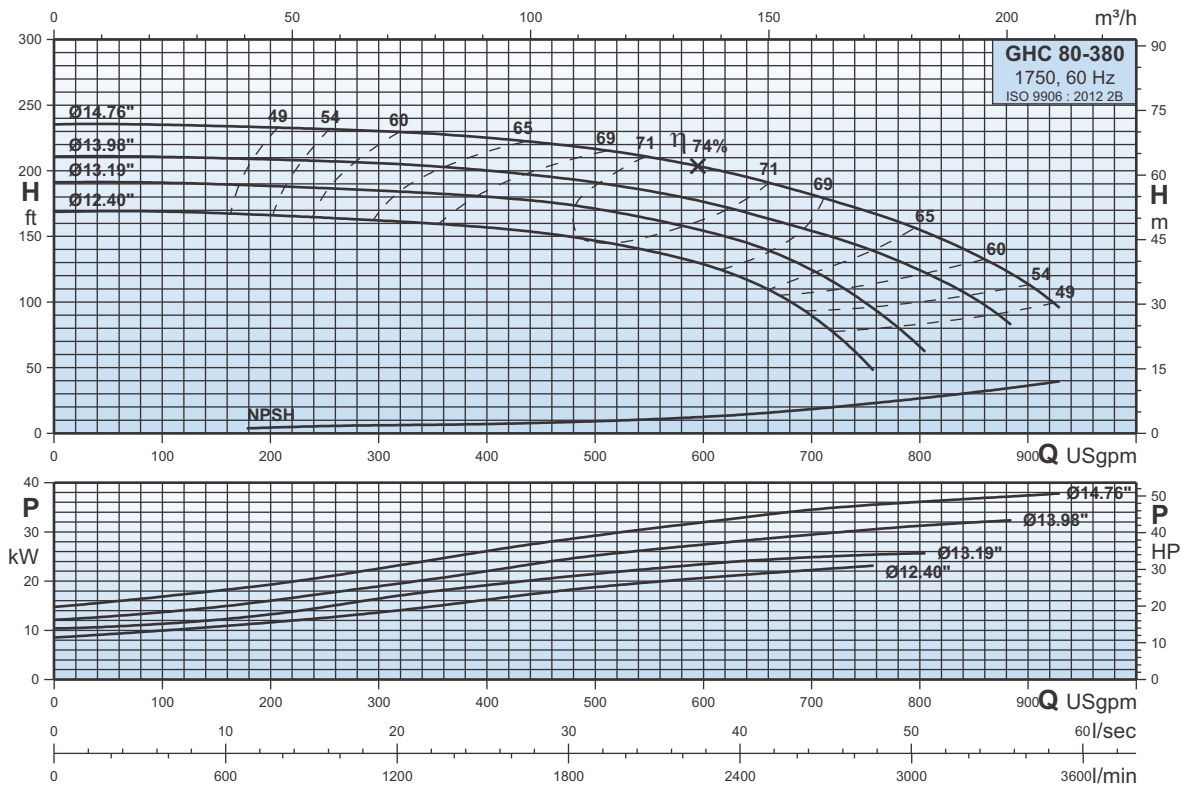
1750



GHC 80-380

Curvas Características
Characteristic Curves
Courbes Caractéristiques

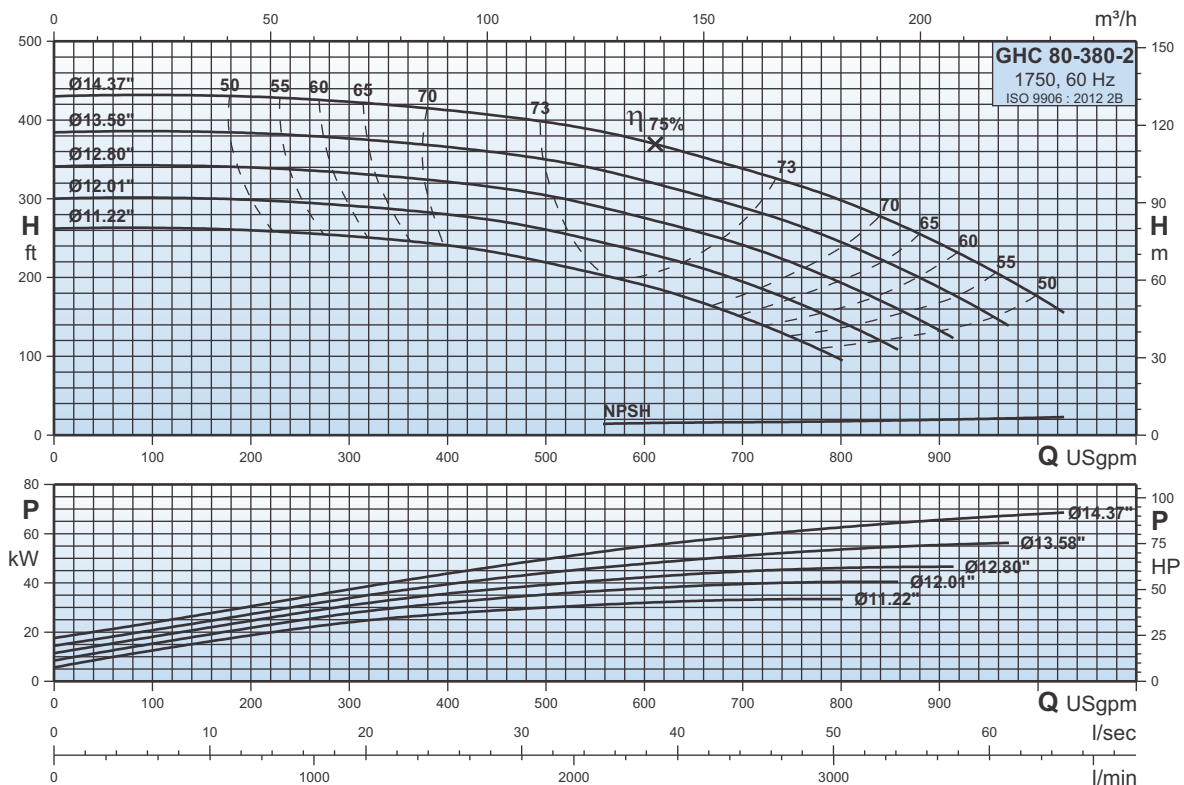
1750



GHC 80-380-2

Curvas Características
Characteristic Curves
Courbes Caractéristiques

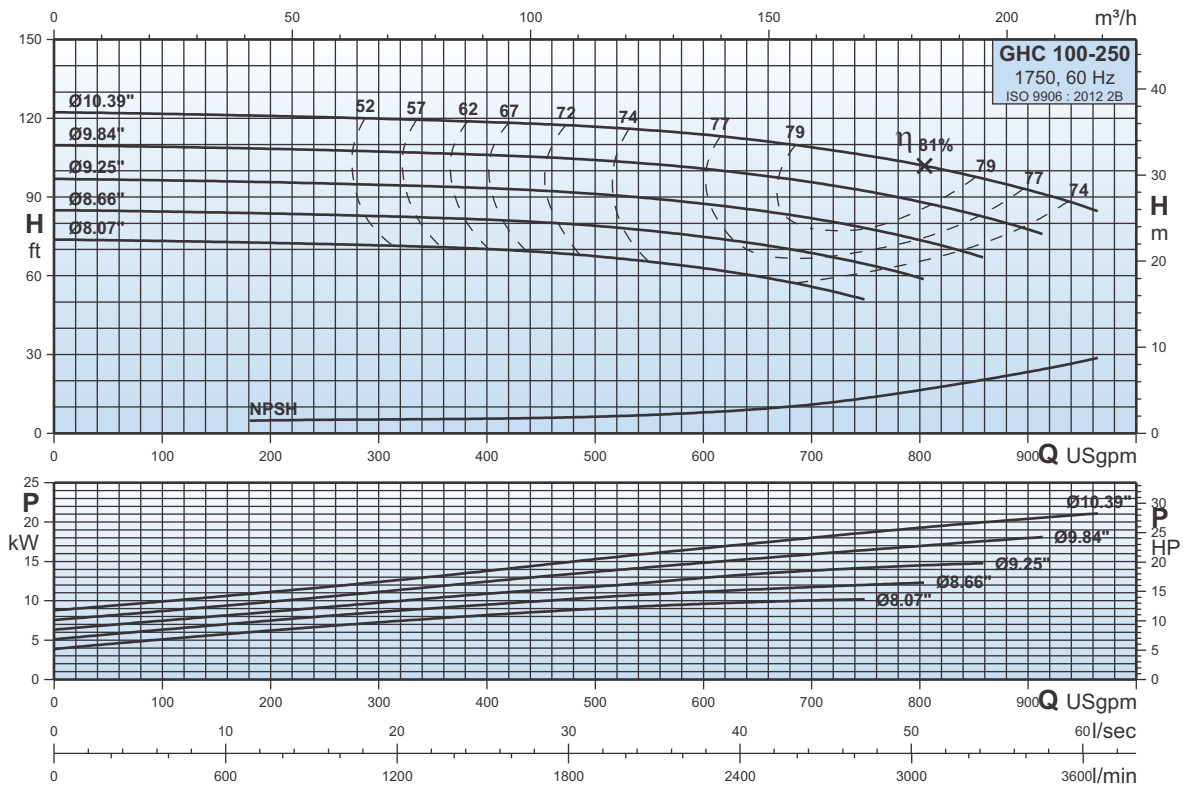
1750



GHC 100-250

Curvas Características
Characteristic Curves
Courbes Caractéristiques

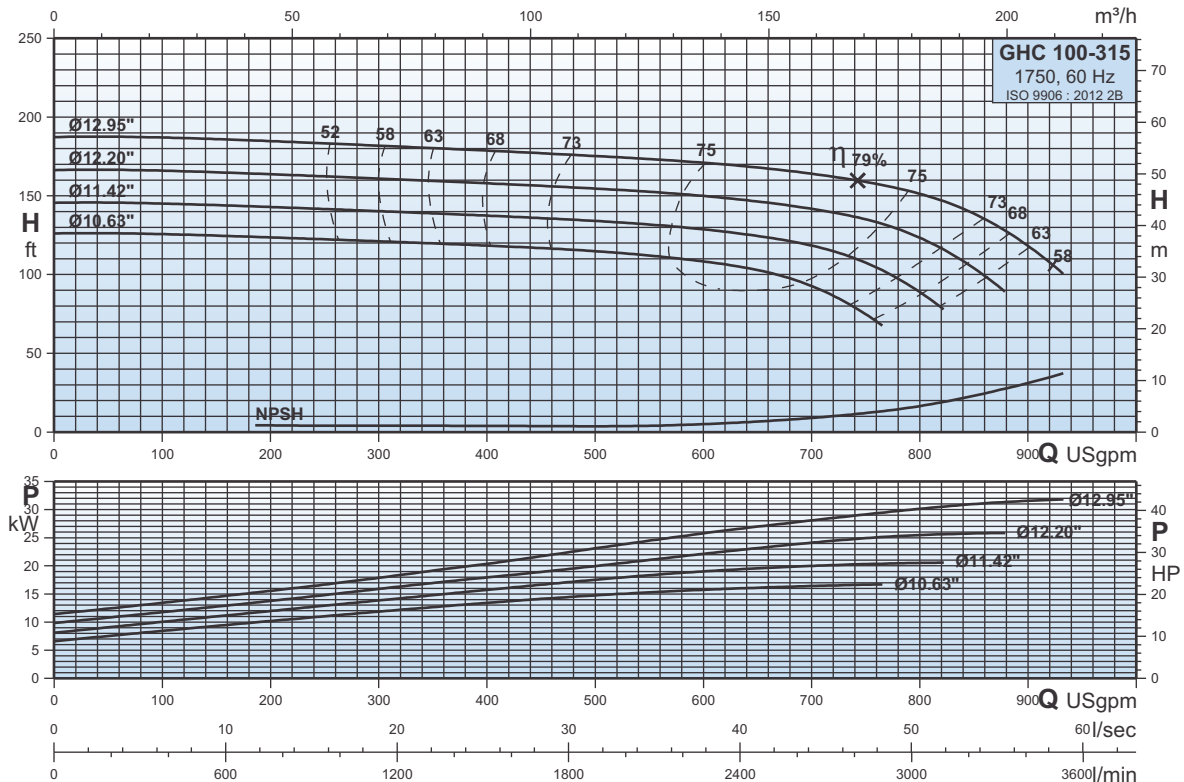
1750



GHC 100-315

Curvas Características
Characteristic Curves
Courbes Caractéristiques

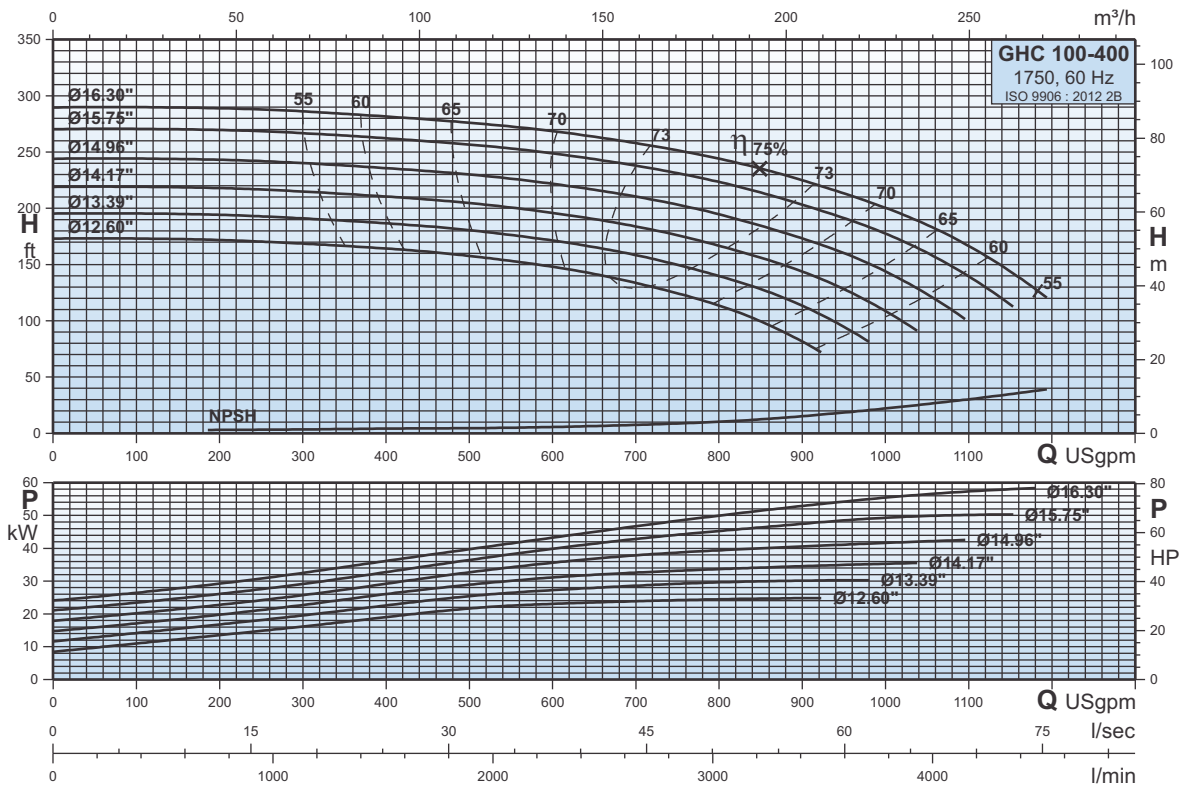
1750



GHC 100-400

Curvas Características
Characteristic Curves
Courbes Caractéristiques

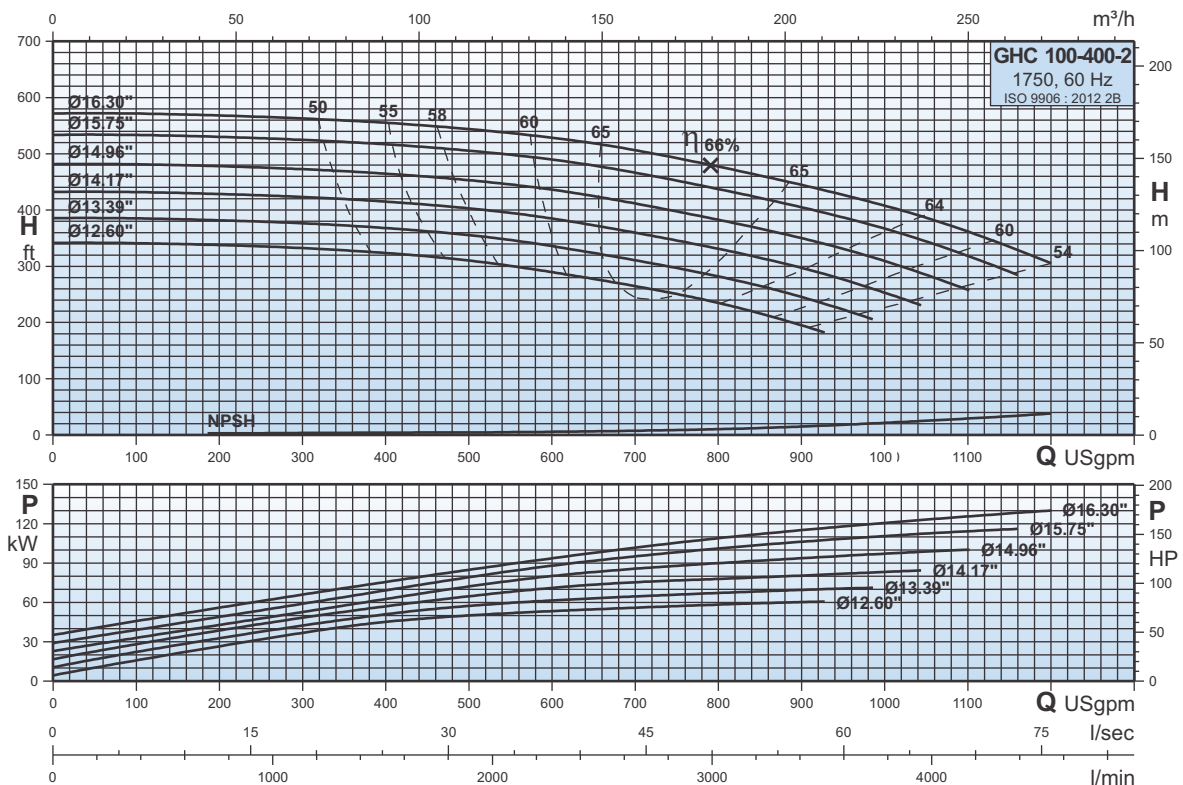
1750



GHC 100-400-2

Curvas Características
Characteristic Curves
Courbes Caractéristiques

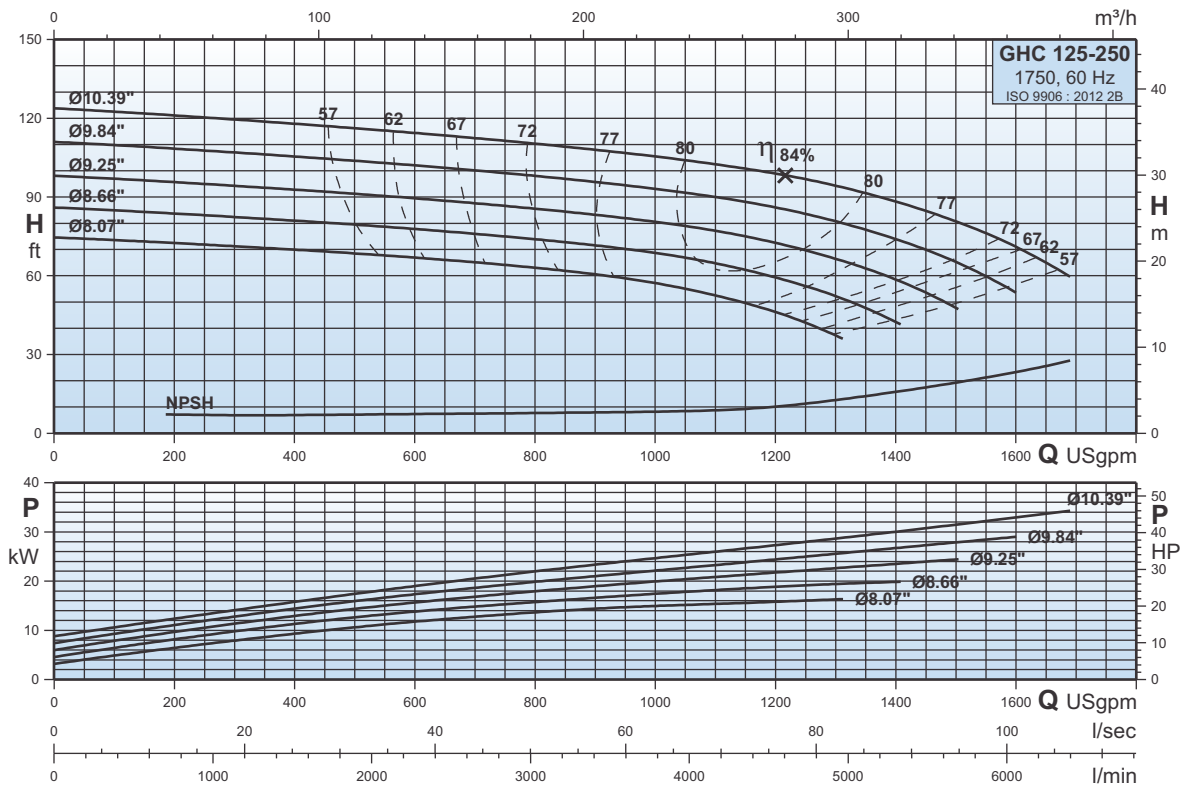
1750



GHC 125-250

Curvas Características
Characteristic Curves
Courbes Caractéristiques

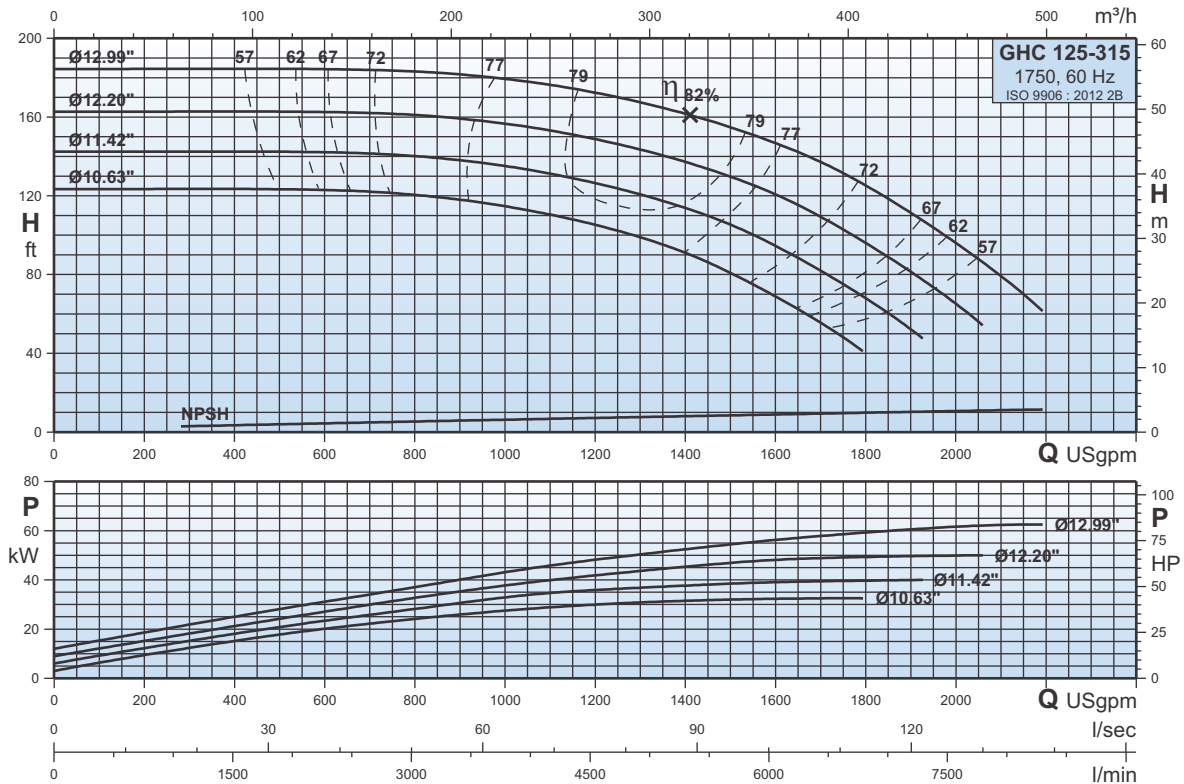
1750



GHC 125-315

Curvas Características
Characteristic Curves
Courbes Caractéristiques

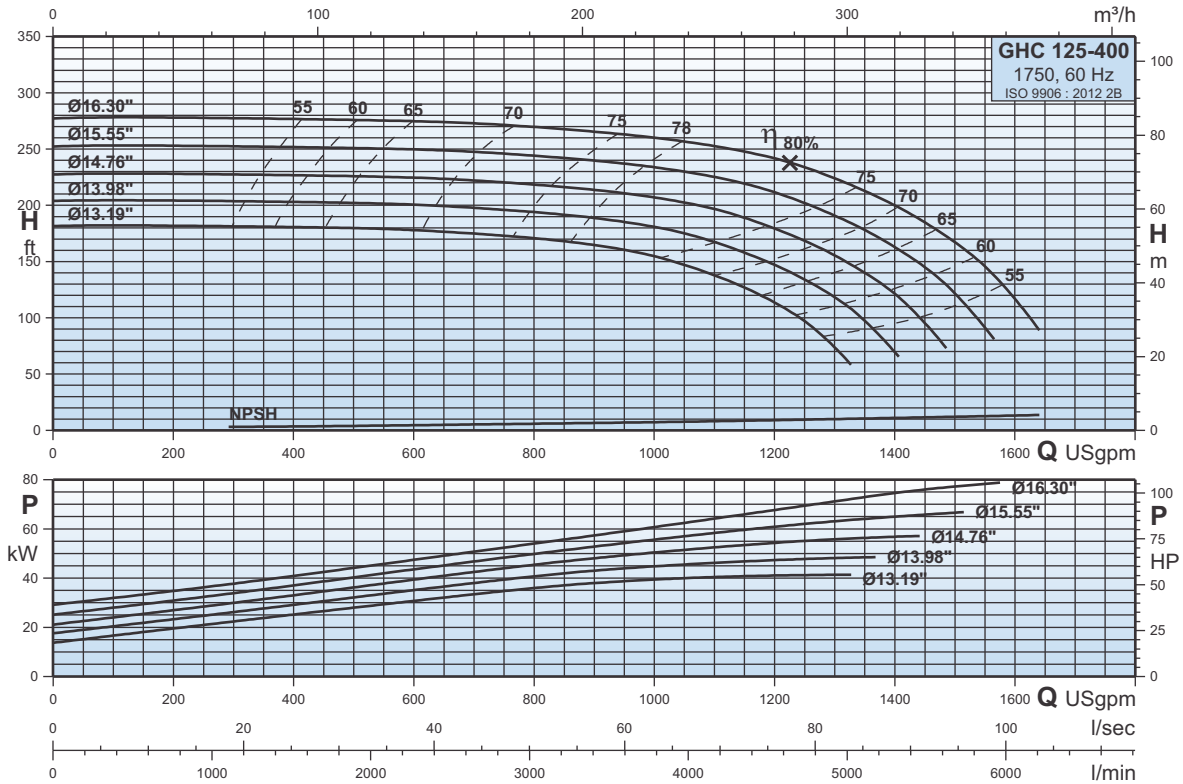
1750



GHC 125-400

Curvas Características
Characteristic Curves
Courbes Caractéristiques

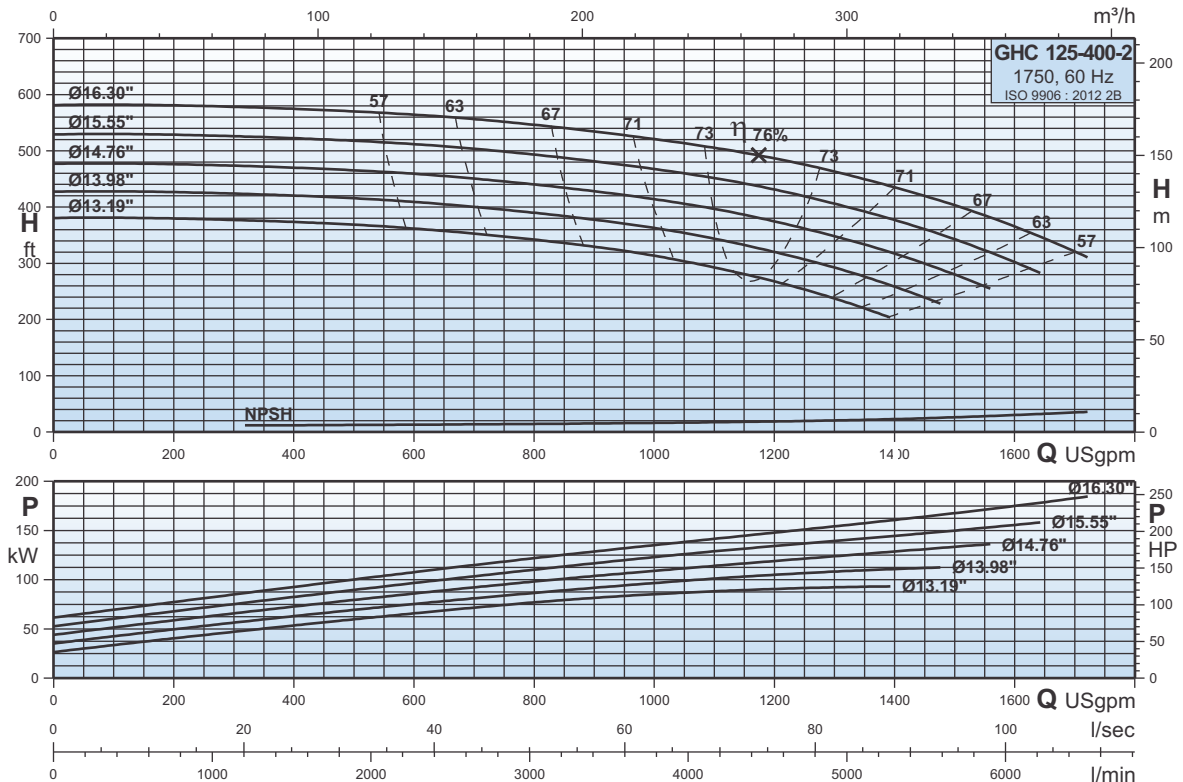
1750



GHC 125-400-2

Curvas Características
Characteristic Curves
Courbes Caractéristiques

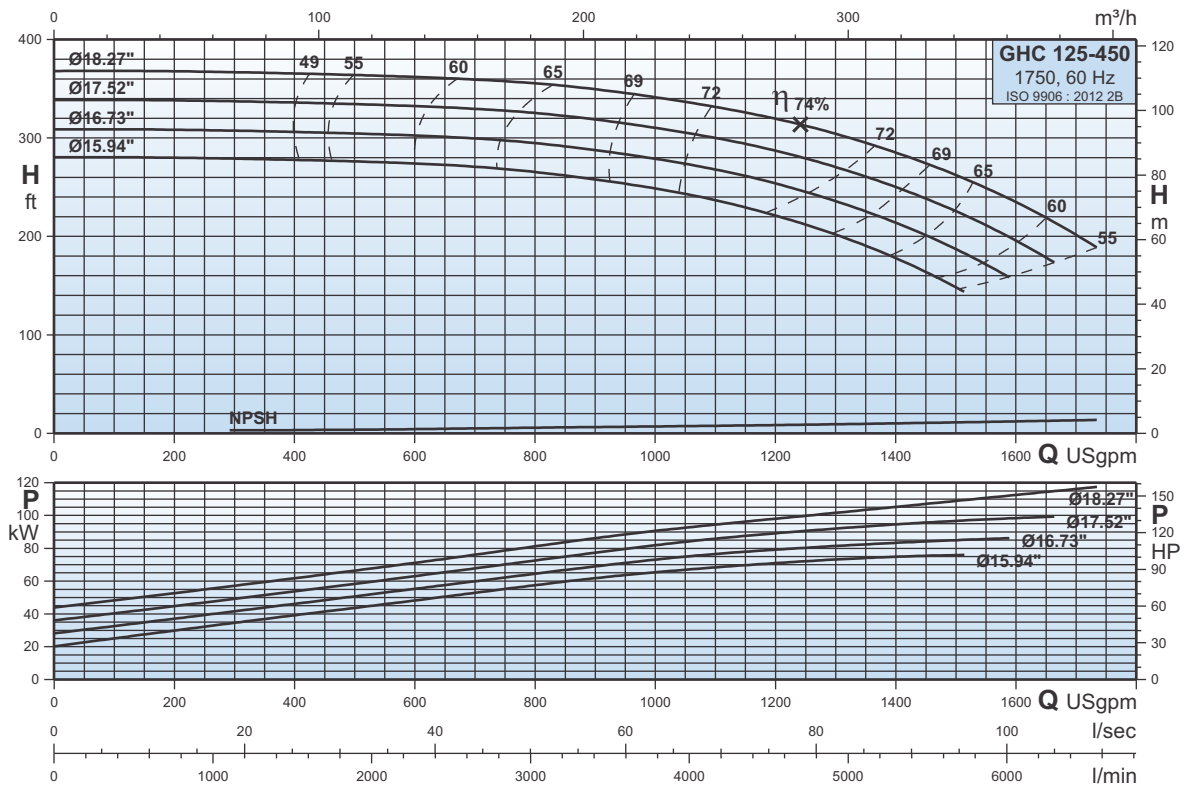
1750



GHC 125-450

Curvas Características
Characteristic Curves
Courbes Caractéristiques

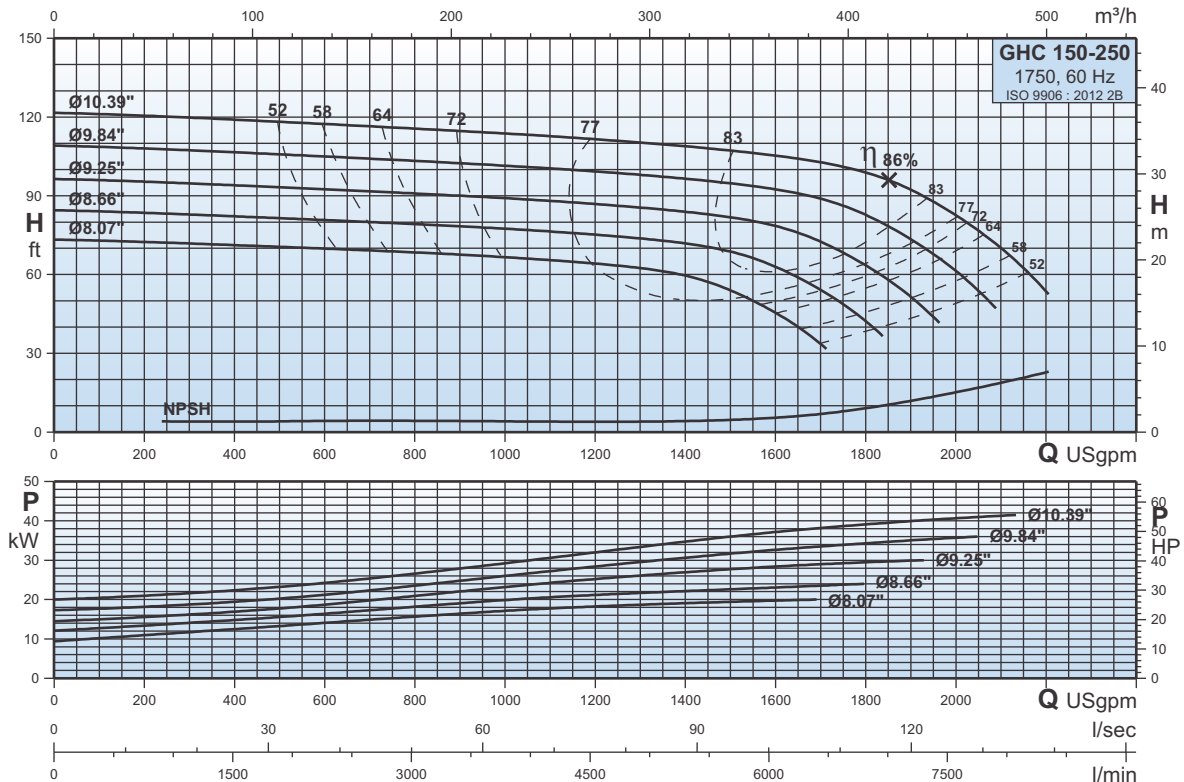
1750



GHC 150-250

Curvas Características
Characteristic Curves
Courbes Caractéristiques

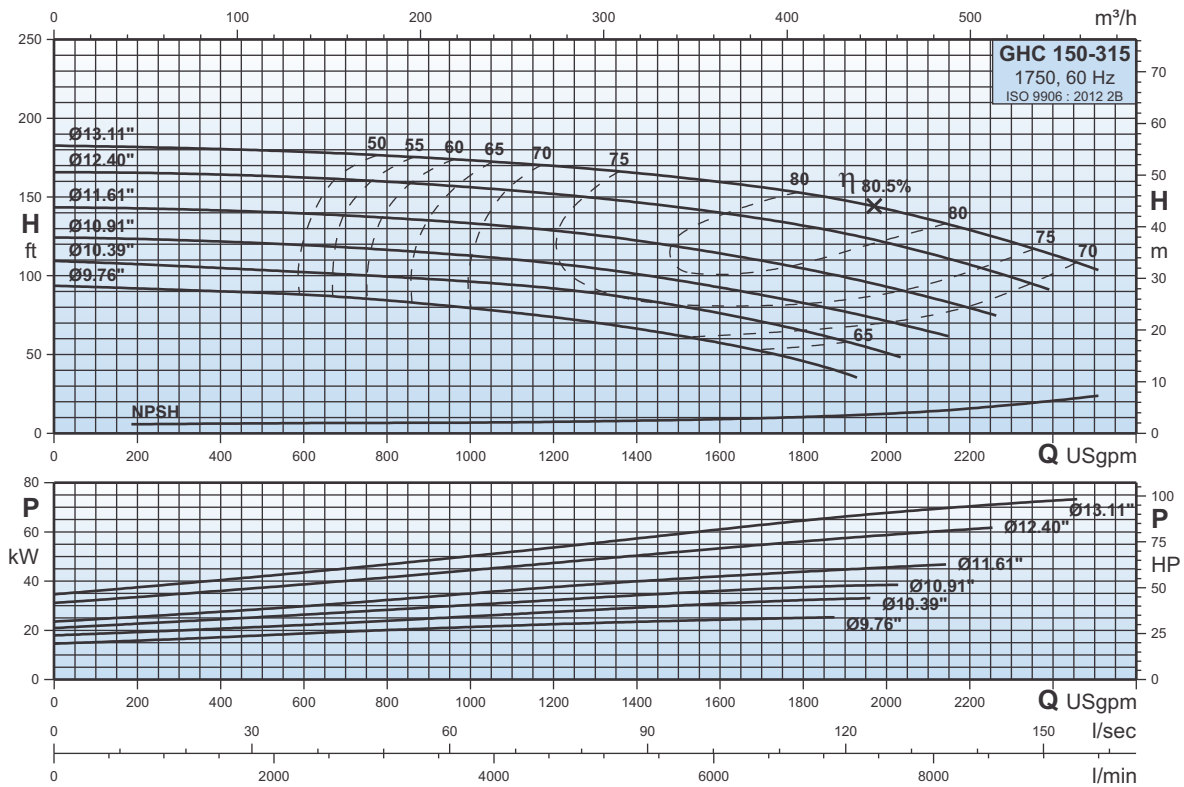
1750



GHC 150-315

Curvas Características
Characteristic Curves
Courbes Caractéristiques

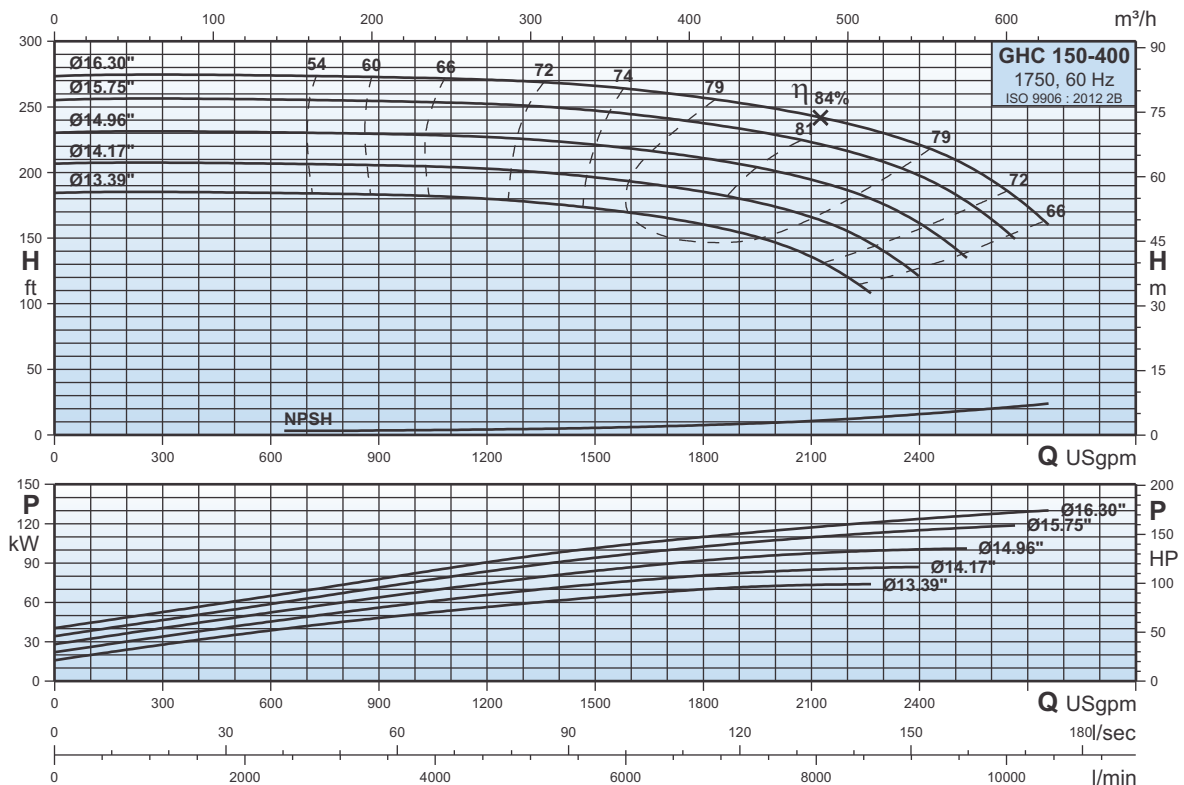
1750



GHC 150-400

Curvas Características
Characteristic Curves
Courbes Caractéristiques

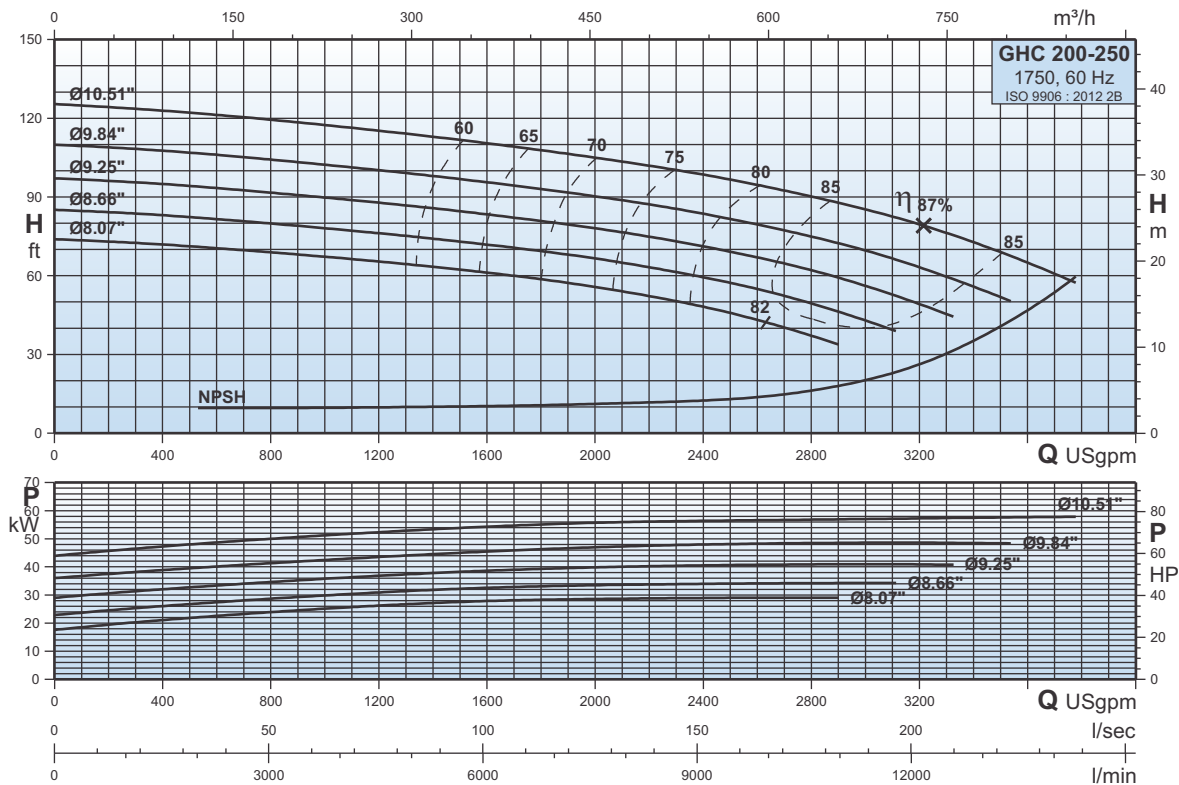
1750



GHC 200-250

Curvas Características
Characteristic Curves
Courbes Caractéristiques

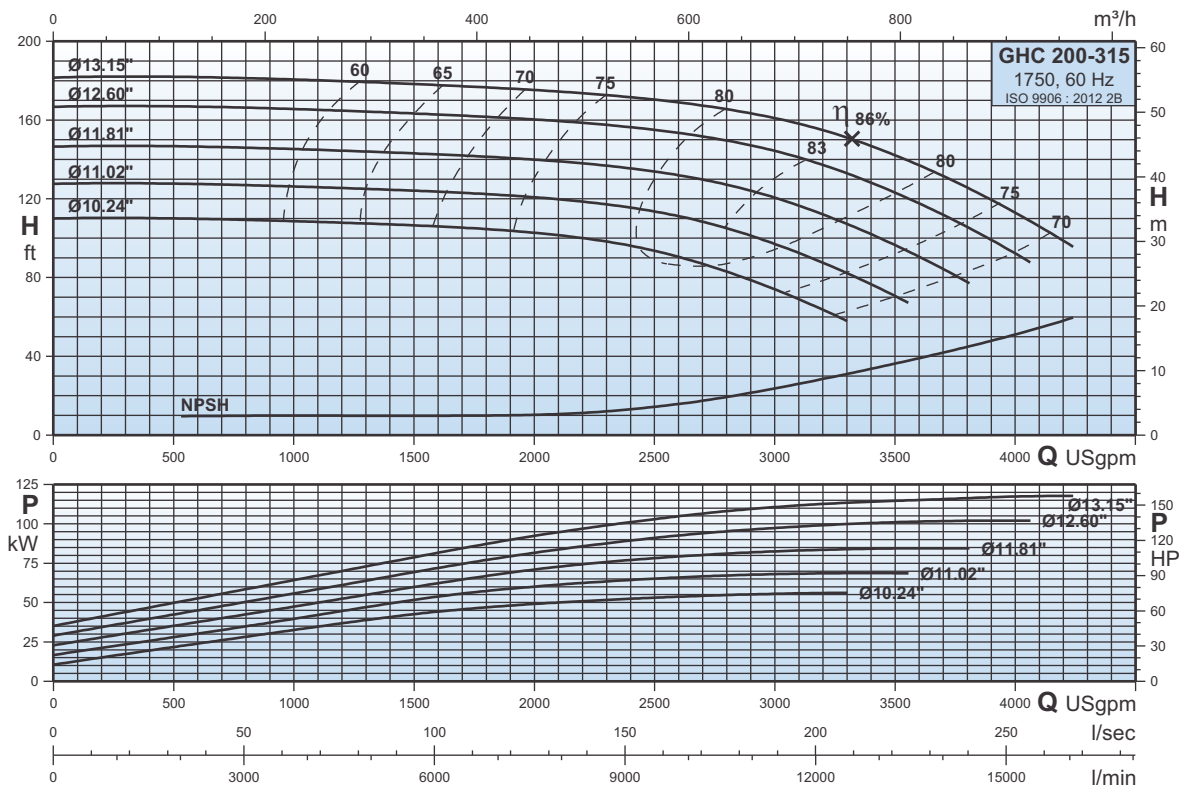
1750



GHC 200-315

Curvas Características
Characteristic Curves
Courbes Caractéristiques

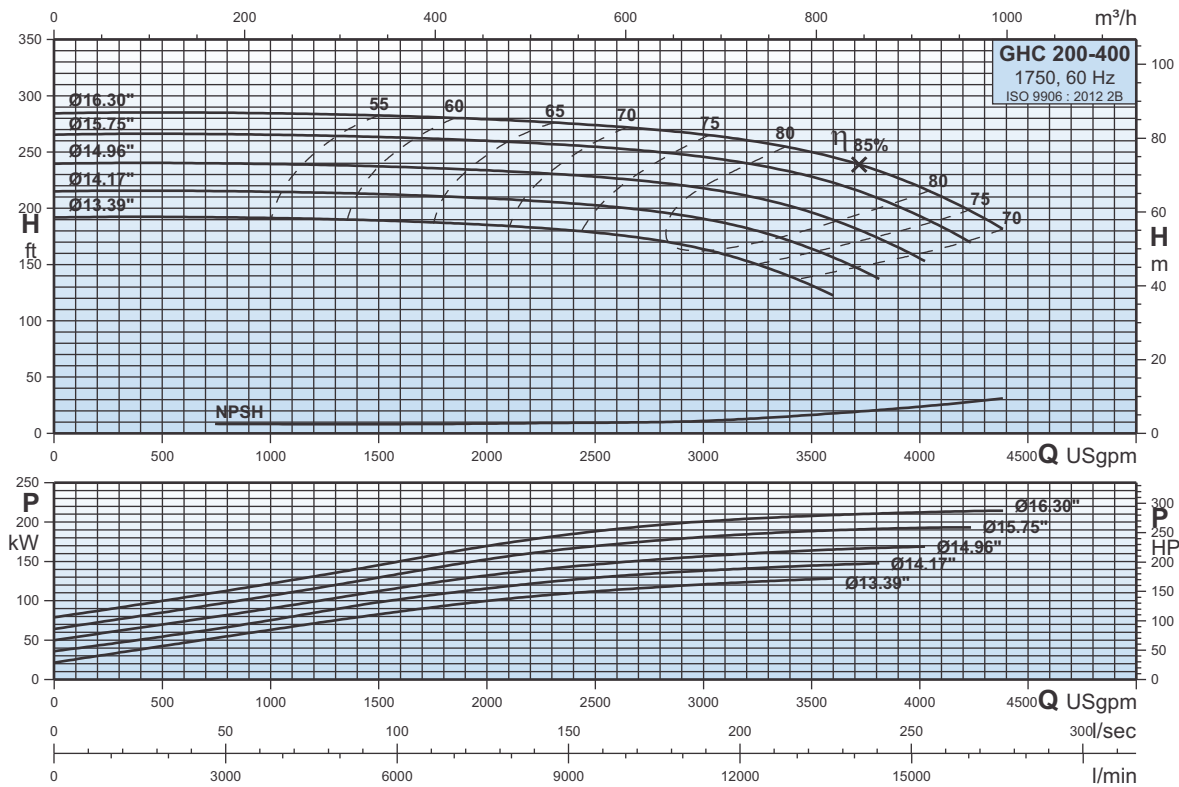
1750



GHC 200-400

Curvas Características
Characteristic Curves
Courbes Caractéristiques

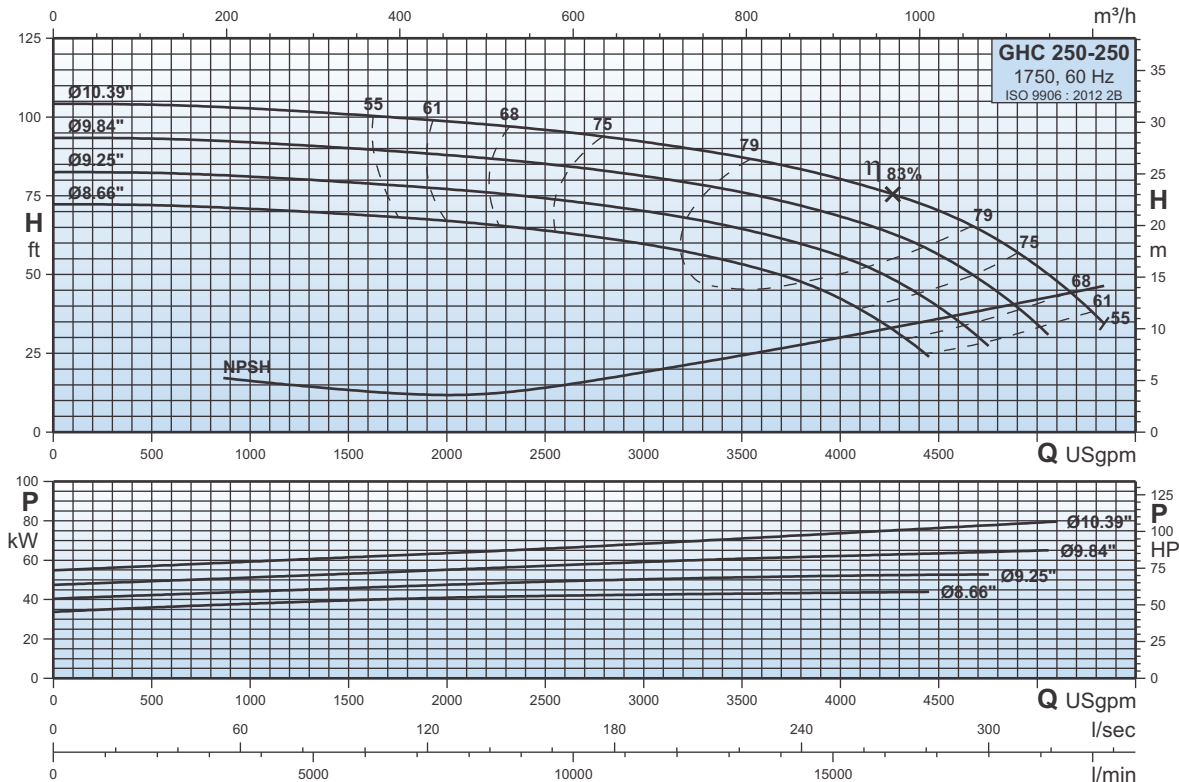
1750



GHC 250-250

Curvas Características
Characteristic Curves
Courbes Caractéristiques

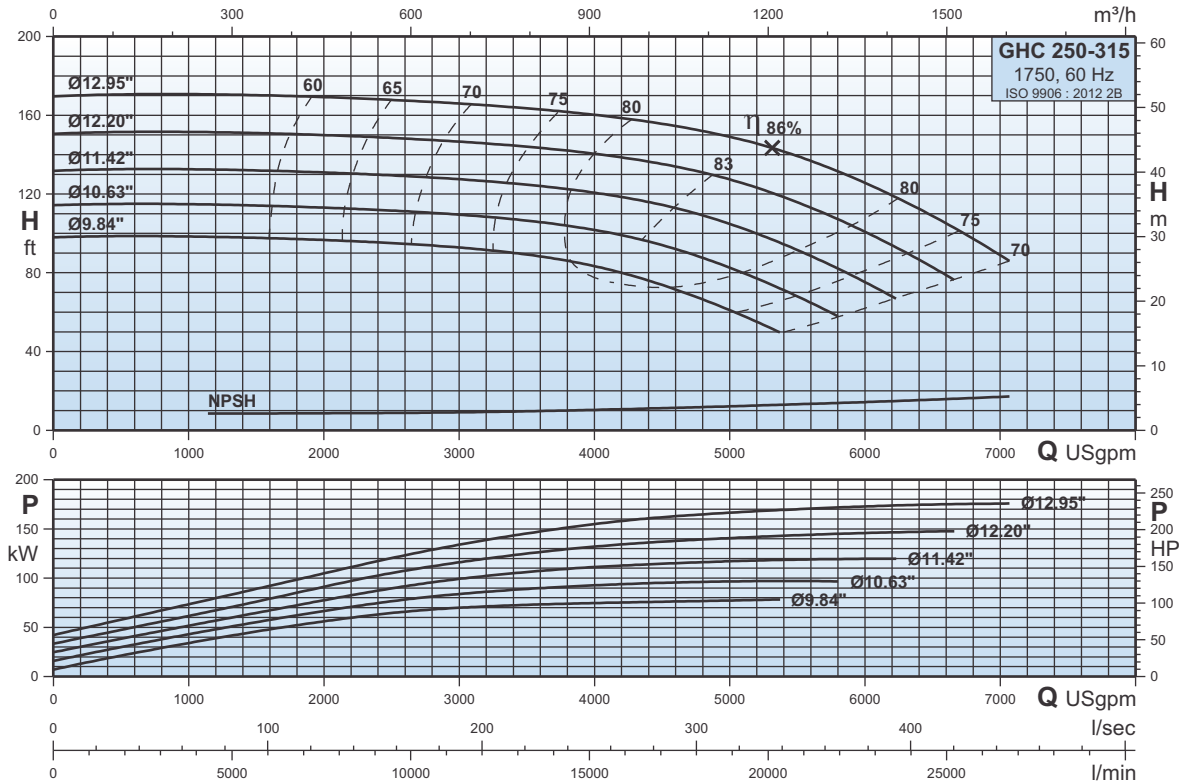
1750



GHC 250-315

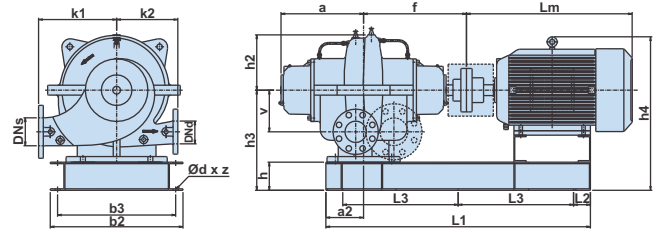
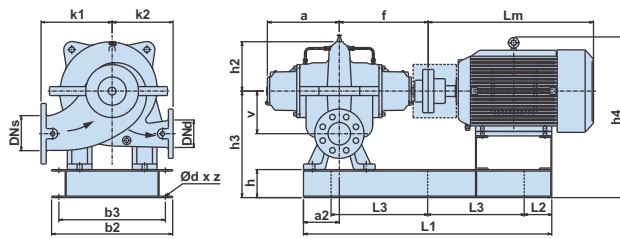
Curvas Características
Characteristic Curves
Courbes Caractéristiques

1750



Dimensiones y pesos
Dimensions and Weights
Dimensions et poids

1750



GHC 80-250, GHC 80-315, GHC 80-380, GHC 100-250, GHC 100-315

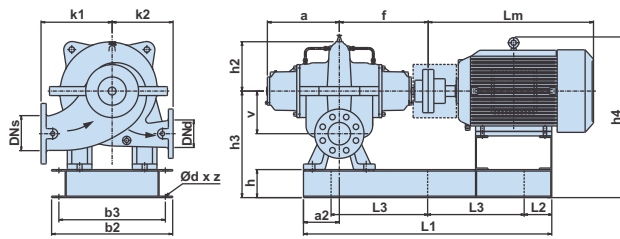
GHC 80-250-2, GHC 80-315-2, GHC 80-380-2

P ₂	GHC 80-250					GHC 80-250-2					GHC 80-315					GHC 80-315-2				
	[HP]	7,5	10	15	20	10	15	20	25	15	20	25	30	40	30	40	50	60		
[kW]	5,5	7,5	11	15	15	7,5	11	15	18,5	11	15	18,5	22	30	22	30	37	45		
Carcasa/Frame/Armature	213T	215T	254T	256T	215T	254T	256T	284T	254T	256T	284T	286T	324T	286T	324T	326T	364T			
ANSI [psi]	125	125	125	125	125	125	125	125	125	125	125	125	125	125	125	250	250			
DN _s [pulgadas/inch/pouces]	4,00	4,00	4,00	4,00	4,00	4,00	4,00	4,00	4,00	4,00	4,00	4,00	4,00	4,00	4,00	4,00	4,00			
DN _d [pulgadas/inch/pouces]	3,00	3,00	3,00	3,00	3,00	3,00	3,00	3,00	3,00	3,00	3,00	3,00	3,00	3,00	3,00	3,00	3,00			
a [pulgadas/inch/pouces]	12,17	12,17	12,17	12,17	13,31	13,31	13,31	13,31	12,48	12,48	12,48	12,48	12,48	15,00	15,00	15,00	15,00			
a ₂ [pulgadas/inch/pouces]	5,91	5,91	5,91	5,91	5,91	5,91	5,91	5,91	6,89	6,89	6,89	6,89	6,89	6,61	6,61	6,61	6,61			
f [pulgadas/inch/pouces]	15,39	15,39	15,39	15,39	16,50	16,50	16,50	16,50	15,67	15,67	15,67	15,67	15,67	15,67	15,67	15,67	15,67			
k ₁ [pulgadas/inch/pouces]	11,22	11,22	11,22	11,22	12,80	12,80	12,80	12,80	12,80	12,80	12,80	12,80	12,80	12,40	12,40	12,40	12,40			
k ₂ [pulgadas/inch/pouces]	9,45	9,45	9,45	9,45	10,24	10,24	10,24	10,24	12,40	12,40	12,40	12,40	12,40	9,84	9,84	9,84	9,84			
v [pulgadas/inch/pouces]	5,71	5,71	5,71	5,71	5,51	5,51	5,51	5,51	7,68	7,68	7,68	7,68	7,68	6,30	6,30	6,30	6,30			
h ₂ [pulgadas/inch/pouces]	7,28	7,28	7,28	7,28	7,52	7,52	7,52	7,52	9,21	9,21	9,21	9,21	9,21	8,74	8,74	8,74	8,74			
h ₃ [pulgadas/inch/pouces]	15,94	15,94	15,94	15,94	15,94	15,94	15,94	15,94	17,91	17,91	17,91	17,91	17,91	16,54	16,54	16,54	16,54			
h ₄ [pulgadas/inch/pouces]	23,27	23,27	24,67	24,67	23,74	24,69	24,69	25,47	26,65	26,65	27,44	27,44	28,03	26,06	26,65	26,65	27,72			
L _m [pulgadas/inch/pouces]	19,96	19,96	23,35	25,00	19,96	23,35	25,00	28,46	23,35	25,00	28,46	30,00	32,44	30,00	32,44	32,44	33,62			
h [pulgadas/inch/pouces]	4,92	4,92	4,92	4,92	4,92	4,92	4,92	4,92	4,92	4,92	4,92	4,92	4,92	4,92	4,92	4,92	4,92			
b ₂ [pulgadas/inch/pouces]	19,29	19,29	19,29	19,29	26,38	26,38	26,38	26,38	23,82	23,82	23,82	23,82	23,82	21,26	21,26	21,26	21,26			
b ₃ [pulgadas/inch/pouces]	16,73	16,73	16,73	16,73	23,82	23,82	23,82	23,82	21,26	21,26	21,26	21,26	21,26	18,70	18,70	18,70	18,70			
L ₁ [pulgadas/inch/pouces]	36,46	36,46	39,02	40,67	37,09	39,92	41,57	44,02	40,31	41,97	42,99	44,33	46,93	45,35	47,87	47,87	48,50			
L ₂ [pulgadas/inch/pouces]	2,95	2,95	2,95	2,95	2,95	2,95	2,95	2,95	2,95	2,95	2,95	2,95	2,95	2,95	2,95	2,95	2,95			
L ₃ [pulgadas/inch/pouces]	15,28	15,28	16,56	17,38	15,59	17,01	17,83	19,06	17,20	18,03	18,54	19,21	20,51	19,72	20,98	20,98	21,30			
Ød x z	0,87 X 6	0,87 X 6	0,87 X 6	0,87 X 6	0,87 X 6	0,87 X 6	0,87 X 6	0,87 X 6	0,87 X 6	0,87 X 6	0,87 X 6	0,87 X 6	0,87 X 6	0,87 X 6	0,87 X 6	0,87 X 6	0,87 X 6			
Peso neto Net weight Poids net	[lbs]	625	658	746	801	790	867	916	1091	871	925	1095	1135	1272	1184	1313	1368	1485		
Peso bruto Gross weight Poids brut	[lbs]	836	869	964	1026	979	1056	1105	1280	1131	1186	1368	1410	1555	1441	1577	1632	1751		
Volumen bruto Gross volume Volume brut	[ft ³]	31,65	31,65	33,58	34,53	38,94	38,94	38,94	38,94	43,79	45,01	47,56	48,69	50,49	43,76	45,32	45,32	46,08		

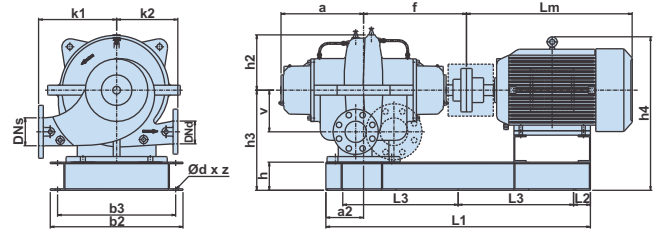
P ₂	GHC 80-380			GHC 80-380-2				GHC 100-250				GHC 100-315			
	[HP]	30	40	50	50	60	75	100	15	20	25	30	25	30	40
[kW]	22	30	37	37	45	55	75	11	15	18,5	22	18,5	22	30	37
Carcasa/Frame/Armature	286T	324T	326T	326T	364T	365T	405T	254T	256T	284T	286T	284T	286T	324T	326T
ANSI [psi]	125	125	125	125	250	250	250	125	125	125	125	125	125	125	125
DN _s [pulgadas/inch/pouces]	4,00	4,00	4,00	4,00	4,00	4,00	4,00	5,00	5,00	5,00	5,00	5,00	5,00	5,00	5,00
DN _d [pulgadas/inch/pouces]	3,00	3,00	3,00	3,00	3,00	3,00	3,00	4,00	4,00	4,00	4,00	4,00	4,00	4,00	4,00
a [pulgadas/inch/pouces]	12,48	12,48	12,48	15,91	15,91	15,91	15,91	12,72	12,72	12,72	12,72	12,72	12,72	12,72	12,72
a ₂ [pulgadas/inch/pouces]	6,89	6,89	6,89	5,04	5,04	5,04	5,04	6,30	6,30	6,30	6,30	6,30	6,30	6,30	6,30
f [pulgadas/inch/pouces]	15,71	15,71	15,71	17,17	17,17	17,17	17,17	15,91	15,91	15,91	15,91	15,91	15,91	15,91	15,91
k ₁ [pulgadas/inch/pouces]	12,80	12,80	12,80	13,78	13,78	13,78	13,78	12,20	12,20	12,20	12,20	12,20	12,20	12,60	12,60
k ₂ [pulgadas/inch/pouces]	12,40	12,40	12,40	10,83	10,83	10,83	10,83	9,84	9,84	9,84	9,84	9,84	9,84	10,83	10,83
v [pulgadas/inch/pouces]	7,68	7,68	7,68	7,28	7,28	7,28	7,28	6,69	6,69	6,69	6,69	6,69	6,69	7,48	7,48
h ₂ [pulgadas/inch/pouces]	9,21	9,21	9,21	9,69	9,69	9,69	9,69	7,83	7,83	7,83	7,83	7,83	7,83	8,66	8,66
h ₃ [pulgadas/inch/pouces]	17,91	17,91	17,91	17,52	17,52	17,52	17,52	17,52	17,52	17,52	17,52	17,52	17,52	18,70	18,70
h ₄ [pulgadas/inch/pouces]	27,44	28,03	28,03	27,64	28,74	28,74	30,00	26,26	26,26	27,05	27,05	27,05	27,05	28,23	28,23
L _m [pulgadas/inch/pouces]	30,00	32,44	32,44	32,44	33,62	34,61	38,70	23,35	25,00	28,46	30,00	28,46	30,00	32,44	32,44
h [pulgadas/inch/pouces]	4,92	4,92	4,92	4,92	4,92	4,92	4,92	4,92	4,92	4,92	4,92	4,92	4,92	4,92	4,92
b ₂ [pulgadas/inch/pouces]	23,82	23,82	23,82	23,23	23,23	23,23	23,23	19,29	19,29	19,29	19,29	19,29	19,29	21,26	21,26
b ₃ [pulgadas/inch/pouces]	21,26	21,26	21,26	20,67	20,67	20,67	20,67	16,73	16,73	16,73	16,73	16,73	16,73	18,70	18,70
L ₁ [pulgadas/inch/pouces]	44,33	46,85	46,85	49,21	49,92	50,87	54,41	40,31	41,97	42,68	44,02	42,68	44,02	46,54	46,54
L ₂ [pulgadas/inch/pouces]	2,95	2,95	2,95	2,95	2,95	2,95	2,95	2,95	2,95	2,95	2,95	2,95	2,95	2,95	2,95
L ₃ [pulgadas/inch/pouces]	19,21	20,47	20,47	21,65	22,01	22,48	24,25	17,20	18,03	18,39	19,06	18,39	19,06	20,31	20,31
Ød x z	0,87 X 6	0,87 X 6	0,87 X 6	0,87 X 6	0,87 X 6	0,87 X 6	0,87 X 6	0,87 X 6	0,87 X 6	0,87 X 6	0,87 X 6	0,87 X 6	0,87 X 6	0,87 X 6	0,87 X 6
Peso neto Net weight Poids net	[lbs]	1148	1285	1340	1448	1564	1674	2090	805	859	1029	1069	1097	1137	1274
Peso bruto Gross weight Poids brut	[lbs]	1423	1569	1624	1742	1863	1978	2405	1041	1098	1278	1322	1359	1406	1547
Volumen bruto Gross volume Volume brut	[ft ³]	48,72	50,52	50,52	53,23	54,09	54,80	57,77	38,03	39,08	41,28	42,26	45,53	46,61	48,32

Dimensiones y pesos
Dimensions and Weights
Dimensions et poids

1750



GHC 100-400, GHC 125-250, 125-315, GHC 125-400, GHC 125-450, GHC 150-250



GHC 100-400-2, GHC 125-400-2

	GHC 100-400				GHC 100-400-2				GHC 125-250				GHC 125-315					
P₂ [HP]	40	50	60	75	100	125	150	200	20	25	30	40	50	50	60	75	100	
[kW]	30	37	45	55	75	90	110	150	15	18,5	22	30	37	37	45	55	75	
Carcasa/Frame/Armature	324T	326T	364T	365T	405T	444T	445T	505T	256T	284T	286T	324T	326T	326T	364T	365T	405T	
ANSI [psi]	125	125	125	250	250	250	250	250	125	125	125	125	125	125	125	125	125	
DN _s [pulgadas/inch/pouces]	5,00	5,00	5,00	5,00	5,00	5,00	5,00	5,00	6,00	6,00	6,00	6,00	6,00	6,00	6,00	6,00	6,00	
DN _d [pulgadas/inch/pouces]	4,00	4,00	4,00	4,00	4,00	4,00	4,00	4,00	5,00	5,00	5,00	5,00	5,00	5,00	5,00	5,00	5,00	
a [pulgadas/inch/pouces]	13,15	13,15	13,15	13,15	15,31	15,31	15,31	15,31	13,07	13,07	13,07	13,07	13,07	13,11	13,11	13,11	13,11	
a2 [pulgadas/inch/pouces]	6,30	6,30	6,30	6,30	6,38	6,38	6,38	6,38	6,93	6,93	6,93	6,93	6,93	6,89	6,89	6,89	6,89	
f [pulgadas/inch/pouces]	17,17	17,17	17,17	17,17	19,69	19,69	19,69	19,69	16,30	16,30	16,30	16,30	16,30	17,17	17,17	17,17	17,17	
k1 [pulgadas/inch/pouces]	14,76	14,76	14,76	14,76	15,94	15,94	15,94	15,94	13,19	13,19	13,19	13,19	13,19	13,78	13,78	13,78	13,78	
k2 [pulgadas/inch/pouces]	12,80	12,80	12,80	12,80	12,80	12,80	12,80	12,80	10,83	10,83	10,83	10,83	10,83	11,81	11,81	11,81	11,81	
v [pulgadas/inch/pouces]	8,27	8,27	8,27	8,27	8,86	8,86	8,86	8,86	7,09	7,09	7,09	7,09	7,09	7,68	7,68	7,68	7,68	
h2 [pulgadas/inch/pouces]	10,24	10,24	10,24	10,24	11,10	11,10	11,10	11,10	8,43	8,43	8,43	8,43	8,43	9,61	9,61	9,61	9,61	
h3 [pulgadas/inch/pouces]	19,29	19,29	19,29	19,29	19,69	19,69	19,69	19,69	19,09	19,09	19,09	19,09	19,09	19,69	19,69	19,69	19,69	
h4 [pulgadas/inch/pouces]	29,41	29,41	30,47	30,47	32,20	33,66	33,66	34,84	27,83	28,62	28,62	29,21	29,21	29,80	30,87	30,87	32,17	
Lm [pulgadas/inch/pouces]	32,44	32,44	33,62	34,61	38,70	39,29	43,07	50,83	25,00	28,46	30,00	32,44	32,44	32,44	33,62	34,61	38,70	
h [pulgadas/inch/pouces]	4,92	4,92	4,92	4,92	4,92	4,92	4,92	4,92	4,92	4,92	4,92	4,92	4,92	4,92	4,92	4,92	4,92	
b [pulgadas/inch/pouces]	24,80	24,80	24,80	24,80	26,97	26,97	26,97	29,65	21,26	21,26	21,26	21,26	21,26	22,83	22,83	22,83	22,83	
b3 [pulgadas/inch/pouces]	22,24	22,24	22,24	22,24	24,61	24,61	24,61	27,05	18,70	18,70	18,70	18,70	18,70	20,28	20,28	20,28	20,28	
L1 [pulgadas/inch/pouces]	47,72	47,72	48,43	49,37	55,24	56,30	60,08	67,01	42,60	43,62	44,96	47,48	47,48	48,35	48,98	50,00	53,54	
L2 [pulgadas/inch/pouces]	2,95	2,95	2,95	2,95	2,95	2,95	2,95	5,12	2,95	2,95	2,95	2,95	2,95	2,95	2,95	2,95	2,95	
L3 [pulgadas/inch/pouces]	20,91	20,91	21,26	21,73	24,69	25,20	27,09	28,39	18,35	18,86	19,53	20,79	20,79	21,22	21,54	22,05	23,82	
Ød x z	0,87 X 6 0,87 X 6 0,87 X 6 0,87 X 6 0,87 X 6 0,87 X 6 0,87 X 6 0,87 X 6 0,87 X 6 0,87 X 6 0,87 X 6 0,87 X 6 0,87 X 6 0,87 X 6 0,87 X 6 0,87 X 6 0,87 X 6																	
Peso neto Net weight Poids net	[lbs]	1377	1432	1553	1663	2301	2647	3025	3214	914	1088	1129	1265	1320	1393	1516	1626	2042
Peso bruto Gross weight Poids brut	[lbs]	1692	1747	1872	1984	2583	2928	3340	3529	1173	1359	1401	1547	1602	1698	1824	1936	2363
Volumen bruto Gross volume Volume brut	[ft ³]	59,31	59,31	60,30	61,13	68,32	68,32	80,31	80,31	44,66	47,14	48,24	49,99	49,99	55,57	56,50	57,28	60,50

	GHC 125-400				GHC 125-400-2				GHC 125-450				GHC 150-250				
P₂ [HP]	60	75	100	125	150	200	250	250	100	125	150	30	40	50	60		
[kW]	45	55	75	90	110	150	185	185	75	90	110	22	30	37	45		
Carcasa/Frame/Armature	364T	365T	405T	444T	445T	505T	505T	505T	405T	444T	445T	286T	324T	326T	364T		
ANSI [psi]	125	125	125	125	250	250	250	250	125	250	250	125	125	125	125		
DN _s [pulgadas/inch/pouces]	6,00	6,00	6,00	6,00	6,00	6,00	6,00	6,00	6,00	6,00	6,00	8,00	6,00	6,00	6,00		
DN _d [pulgadas/inch/pouces]	5,00	5,00	5,00	5,00	5,00	5,00	5,00	5,00	5,00	5,00	5,00	6,00	5,00	5,00	5,00		
a [pulgadas/inch/pouces]	13,11	13,11	13,11	13,11	16,46	16,46	16,46	16,46	13,66	13,66	13,66	13,82	13,82	13,82	13,82		
a2 [pulgadas/inch/pouces]	7,28	7,28	7,28	7,28	6,89	6,89	6,89	6,89	7,28	7,28	7,28	7,28	7,28	7,28	7,28		
f [pulgadas/inch/pouces]	17,17	17,17	17,17	17,17	20,67	20,67	20,67	20,67	18,03	18,03	18,03	17,83	17,83	17,83	17,83		
k1 [pulgadas/inch/pouces]	15,78	15,78	15,78	15,78	15,78	18,90	18,90	18,90	15,75	15,75	15,75	15,16	15,16	15,16	15,16		
k2 [pulgadas/inch/pouces]	13,78	13,78	13,78	13,78	13,19	13,19	13,19	13,19	14,76	14,76	14,76	12,80	12,80	12,80	12,80		
v [pulgadas/inch/pouces]	8,27	8,27	8,27	8,27	8,46	8,46	8,46	8,46	9,06	9,06	9,06	7,48	7,48	7,48	7,48		
h2 [pulgadas/inch/pouces]	10,71	10,71	10,71	10,71	11,69	11,69	11,69	11,69	11,18	11,18	11,18	9,17	9,17	9,17	9,17		
h3 [pulgadas/inch/pouces]	20,28	20,28	20,28	20,28	19,88	19,88	19,88	19,88	21,06	21,06	21,06	20,28	20,28	20,28	20,28		
h4 [pulgadas/inch/pouces]	31,50	31,50	32,76	34,25	33,86	37,68	37,68	37,68	33,54	35,04	35,04	29,80	30,39	30,39	31,50		
Lm [pulgadas/inch/pouces]	33,62	34,61	38,70	39,29	43,07	50,83	50,83	50,83	38,70	39,29	43,07	30,00	32,44	32,44	33,62		
h [pulgadas/inch/pouces]	4,92	4,92	4,92	4,92	4,92	4,92	4,92	4,92	4,92	4,92	4,92	4,92	4,92	4,92	4,92		
b [pulgadas/inch/pouces]	26,38	26,38	26,38	26,38	26,97	26,97	26,97	26,97	26,77	26,77	26,77	24,21	24,21	24,21	24,21		
b3 [pulgadas/inch/pouces]	23,82	23,82	23,82	23,82	24,41	24,41	24,41	24,41	24,21	24,21	24,21	21,65	21,65	21,65	21,65		
L1 [pulgadas/inch/pouces]	49,37	50,39	53,94	55,35	61,50	66,30	66,30	66,30	54,80	55,83	59,69	46,93	49,45	49,45	50,08		
L2 [pulgadas/inch/pouces]	2,95	2,95	2,95	2,95	2,95	2,95	2,95	2,95	2,95	2,95	2,95	2,95	2,95	2,95	2,95		
L3 [pulgadas/inch/pouces]	21,73	22,24	24,02	24,72	27,80	30,20	30,20	30,20	24,45	24,96	26,89	20,51	21,77	21,77	22,09		
Ød x z	0,87 X 6 0,87 X 6 0,87 X 6 0,87 X 6 0,87 X 6 0,87 X 6 0,87 X 6 0,87 X 6 0,87 X 6 0,87 X 6 0,87 X 6 0,87 X 6 0,87 X 6 0,87 X 6 0,87 X 6 0,87 X 6																
Peso neto Net weight Poids net	[lbs]	1681	1795	2211	2570	3210	3410	3617	3617	2242	2603	2981	1313	1448	1503	1624	
Peso bruto Gross weight Poids brut	[lbs]	2015	2134	2561	2924	3694	3909	4116	4116	2607	2970	3362	1626	1767	1822	1945	
Volumen bruto Gross volume Volume brut	[ft ³]	65,91	66,82	70,58	71,12	102,97	108,37	108,37	108,37	75,96	76,53	80,20	58,94	61,01	61,01	62,01	

